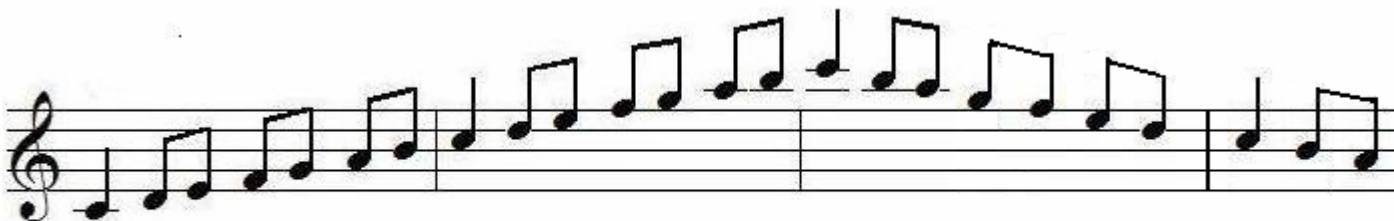


SOLO AND ENSEMBLE PROFICIENCY SCALES

WIND and MELODY PERCUSSION INSTRUMENTS

Required Scale Rhythm:



Chromatic: Even Rhythm – Such as even eighth notes or triplets

Tempo: Maximum controlled speed

Articulation: All slurred or all tongued (adjudicator's choice)

Note: Proficiency examinations are cumulative, i.e., Proficiency II includes all scales listed in both I and II, and Proficiency III includes scales listed for I, II, and III. **All scales must be memorized.** You are allowed 60 seconds to look over the music for the sight reading part of the examination. Upper case (B) indicates major scales, lower case (b) indicates melodic minor, and chr. indicates chromatic. Number after scale indicates number of octaves.

SCALES

Instrument	Proficiency I	Proficiency II	Proficiency III
Piccolo	Bb2, Eb2, F2, C1 g2, c1,d2,a2, Eb Chr. 2	Ab2, G2, D2 f2,bb2, e2, b2, G Chr. 2	A2, E2, B2, Gb2 f#2, g#2, eb2, C Chr. 2
Flute	Bb2, Eb2, F2, C2 g2, c2, d2,	Ab2, Db2, G2, D2 f2, bb2, e2,	A2, E2, B2, Gb2 f#2, c#2,

	a2, Eb Chr. 2	b2, G Chr. 2	g#2, eb2, C Chr. 3
Oboe	Bb1, F1, C2, G1 g1, d1, a1, e1 C Chr. 2	Eb1, Ab1, D2, A1 c2, f1, b2, f#1 D Chr. 2	Db2, Gb1, E2, B2 bb1, eb2, c#2, g#1 E Chr. 2
Bb Clarinet (Eb Soprano)	C2, F3, Bb2, G3 a2, d2, g3, e3 E Chr. 3	Eb2, Ab2, D2, A2 c2, f3, b2, f#3 F Chr. 3	Db2, Gb3, E3, B2 bb2, eb2, c#2, g#2 G Chr. 3
Alto and Bass (Contra) Clarinet	C2, F2, Bb2, G2 a2, d2, g2, e2 E Chr. 2	Eb1, Ab2, D1, A2 c2, f2, b2, f#2 F Chr. 2	Db2, Gb2, E3, B2 bb2, eb1, c#1, g#2 G Chr. 2
Bassoon	Bb2, F2, C2, G2 g2, d2, a2, e2 A Chr. 2	Eb2, Ab2, D2, A2 c2, f2, b2, f#2 Bb Chr. 2	Db2, Gb2, E2, B2 bb2, eb2, c#2, g#2 Bb Chr. 3
Saxophone (Alto, Tenor, Bari)	G1, C2, F2, Bb2 e2, a1, d2, g1 C Chr. 2	D2, A1, Eb2, Ab1 b2, f#1, c2, f2 Bb Chr. 2	E2, B2, Db2, F#2 c#2, g#1, bb2, d#2 F Chr. 2
Cornet Trumpet	C1, F1, Bb2, G2 a2, d1, g2, e1 G Chr. 2	Eb1, Ab2, D1, A2 c2, f1, b2, f#2 Bb Chr. 2	E1, B2, Gb2, Db2 c#2, g#2, eb1, bb2 C Chr. 2
French Horn	F2, Bb1, Eb1, C1 d1, g2, c1, a1 F Chr. 2	Ab2, Db1, G2, D1 f2, bb1, b1, e2 G Chr. 2	A2, E2, B2, Gb2 f#2, c#1, g#2, eb2, C Chr. 3

Trombone	Bb1, Eb1, Ab2, F2 g2, c1, f2, d1 F Chr. 2	Db1, Gb2, C1, G2 bb2, eb1, e2, a2 Ab Chr. 2	D1, A2, E2, B2 b2, f#2, c#1, g#2 Bb Chr. 2
Baritone Bass Clef	Bb1, Eb1, Ab2, F2 g2, c1, f2, d1 F Chr. 2	Db1, Gb2, C1, G2 bb2, eb1, e2, a2 Ab Chr. 2	D1, A2, E2, B2 b2, f#2, c#1, g#2 Bb Chr. 2
Baritone Treble Clef	C1, F1, Bb2, G2 a2, d1, g2, e1 G Chr. 2	Eb1, Ab2, D1, A2 c2, f1, b2, f#2 Bb Chr. 2	E1, B2, Gb2, Db2 c#2, g#2, eb1, bb2 C Chr. 2
Tuba	Bb1, Eb1, Ab2, F2 g2, c1, f2, d1 F Chr. 2	Db1, Gb2, C1, G2 bb2, eb1, e2, a2 Ab Chr. 2	D1, A2, E2, B2 b2, f#2, c#1, g#2 Bb Chr. 2
Melody Percussion*	C2, F2, Bb2, Eb2 a2, d2, g2, c2 Bb Chr. 2	Ab2, Db2, G2, D2 f2, bb2, e2, b2, G Chr. 2 Chord pro. C&F I, IV, V, I	A2, E2, B2, F#2 f#2, c#2, g#2, d#2, C Chr. 3 Chord pro. G & Bb I, IV, V, I

*The LMYO proficiency for percussion will be to play the Melody Percussion scales that are listed here and a solo on the student's instrument of choice.

NOTE: Sight Reading contains some alternate clefs.

There are Horn – bass clef, Bassoon – tenor clef, Trombone – alto/tenor clef